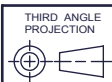
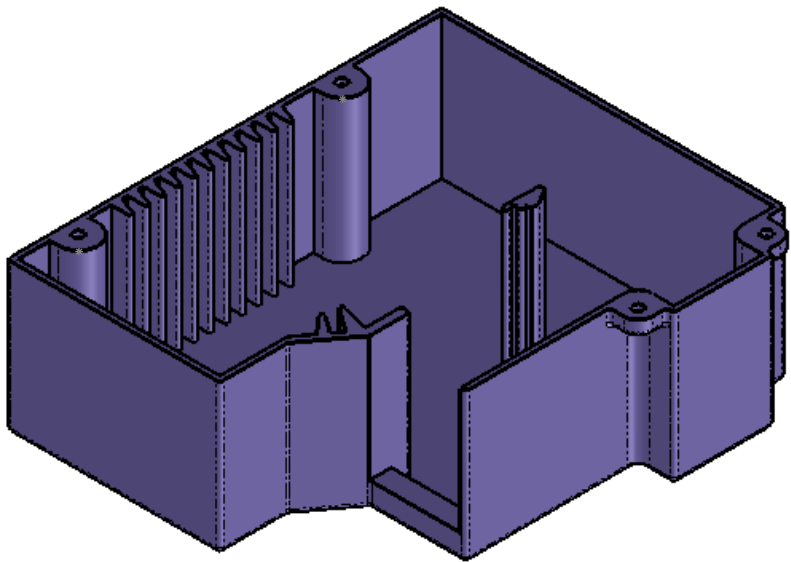
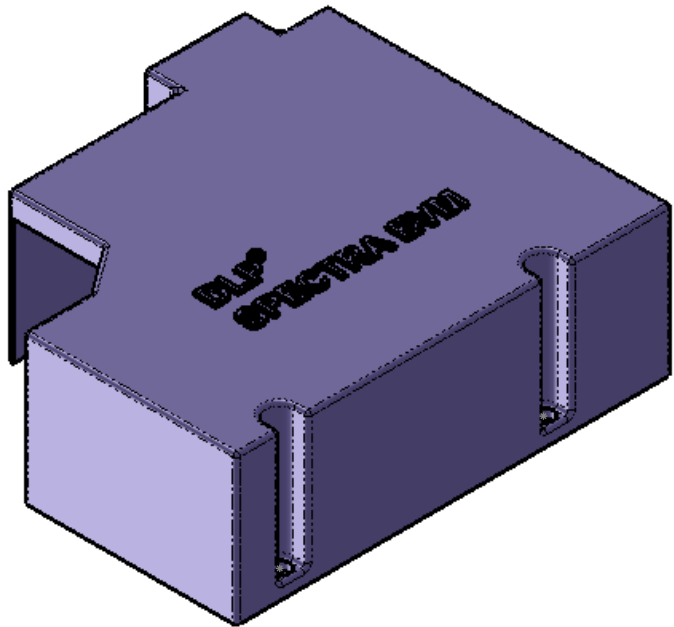
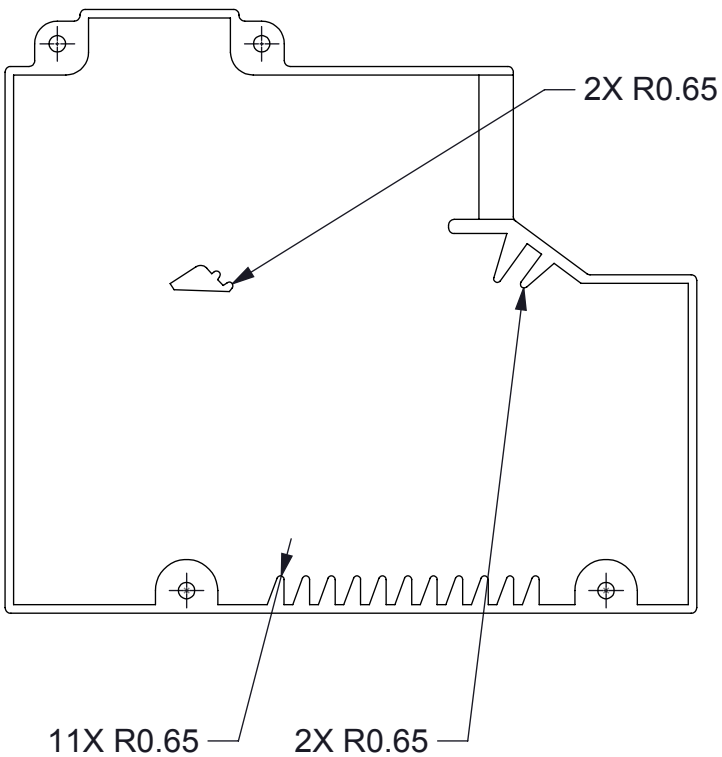
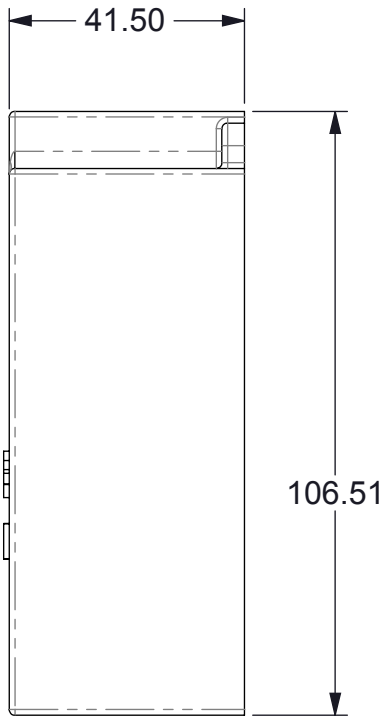
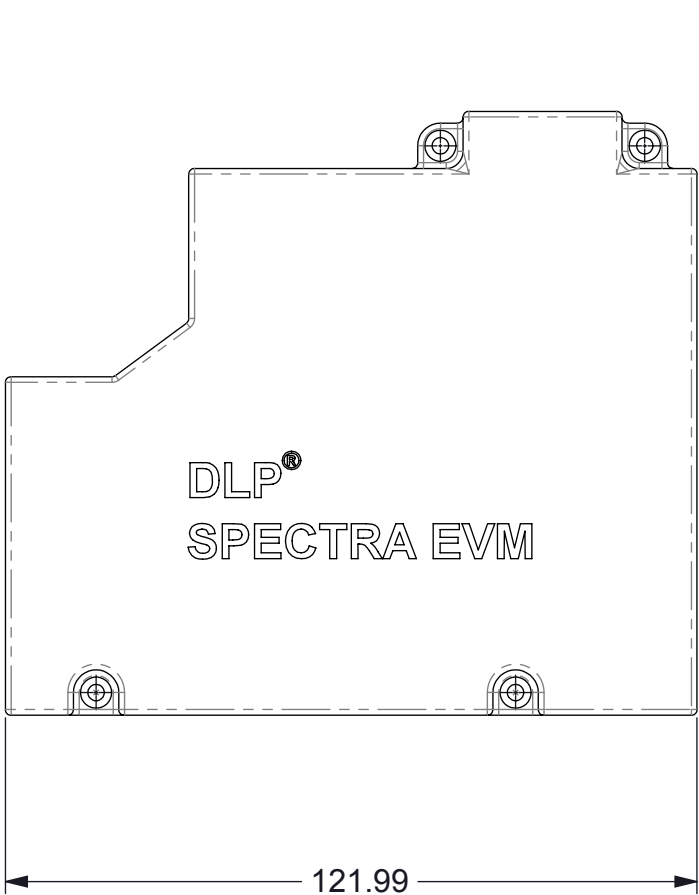


NOTES: UNLESS OTHERWISE SPECIFIED:

1. DIMENSIONS SHOWN ARE FOR REFERENCE ONLY.
2. PART TO BE 3D PRINTED USING STL OR STEP FILE AVAILABLE FROM TEXAS INSTRUMENTS
3. MATERIAL: SLA PROCESS - RENSHAPE BLACK #7820
4. ALL INTERIOR SURFACES TO BE PAINTED WITH AVIAN TECHNOLOGIES AVIAN-BLACK S COATING P/N AVIAN-BKS. APPROPRIATE SURFACE PRIMER TO BE SELECTED BY PART SUPPLIER.

© COPYRIGHT 2013 TEXAS INSTRUMENTS  
UNPUBLISHED, ALL RIGHTS RESERVED

DWG NO 2513373		SHEET 1	1
REVISIONS			
REV	DESCRIPTION	DATE	BY
A	ECO #2136196 - INITIAL RELEASE	9/20/13	RDR
B	REVISED CORNER FILLETS	9/30/13	RDR
C	ADDED RADII TO SHARP EDGES OF INTERNAL BAFFLES	10/1/13	RDR



UNLESS OTHERWISE SPECIFIED

- DIMENSIONS ARE IN MILLIMETERS
- TOLERANCES: ANGLES  $\pm 1^\circ$   
2 PLACE DECIMALS  $\pm 0.25$   
1 PLACE DECIMALS  $\pm 0.50$
- DIMENSIONAL LIMITS APPLY BEFORE PROCESSES
- INTERPRET DIMENSIONS IN ACCORDANCE WITH ASME Y14.5M-1994
- REMOVE ALL BURRS AND SHARP EDGES
- PARENTHETICAL INFO FOR REF ONLY

DWN R ROWE	DATE 9/9/2013
Engr	
CQE/QA	
CM	
Apprvd	



MAIN MODULE COVER

SIZE	DWG NO	REV
B	2513373	C
SCALE 0.75:1		SHEET 1 OF 1